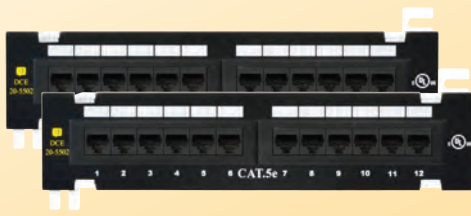


## Features

- Color coded wiring labels for T568A and T568B wiring configurations
- Meets FCC Part 68
- Exceeds TIA/EIA Category 5e/6 standards for high performance transmission
- Designed to fit all standard 19" racks and cabinets
- 25-Year Channel System Warranty
- Comes preconfigured with easy to read 110-style punch downs on the rear side and six port RJ-45 front modules
- 16 gauge steel, black painted panel with UL 94V-0 rated jack housing
- Connector spring wiring contacts are 50 micro inches gold over nickel

## Universal 12-Port Mini Patch Panels



Part Number	Description
20-5502	Category 5e, 12-Port w/ 89D Mounting Bracket
20-5602	Category 6, 12-Port w/ 89D Mounting Bracket

## Universal 12-Port Patch Panels

Part Number	Description
20-5512	Category 5e, 12-Port
20-5612	Category 6, 12-Port



## Universal 24-Port Patch Panels



Part Number	Description
20-5524	Category 5e, 24-Port
20-5624	Category 6, 24-Port

## Universal 48-Port Patch Panels



Part Number	Description
20-5548	Category 5e, 48-Port
20-5648	Category 6, 48-Port

## 19" Rack Cable Management Wire Holder

- For use with any 19" rack mount patch panel

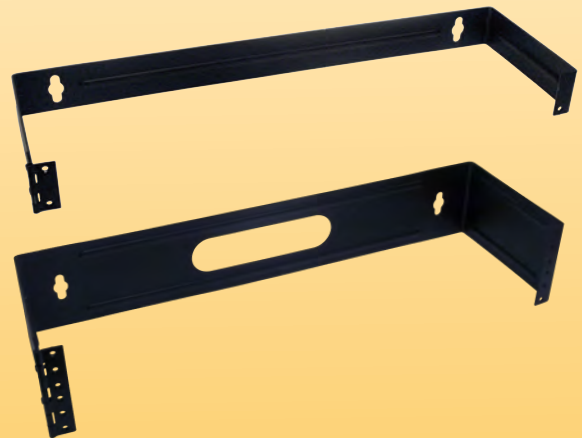
Part Number	Description
20-5550	Patch Panel Accessory



## Hinged Wall Mount Bracket

- Universal left or right hinge mounting
- For use with any 19" rack mount patch panel
- 6" deep mounting bracket

Part Number	Description
20-5551	1U Hinged Wall Mount Bracket
20-5552	2U Hinged Wall Mount Bracket



## 24-Port Blank Patch Panel

- For use with any 19" rack mount patch panel

Part Number	Description
20-5024	Patch Panel Accessory

