

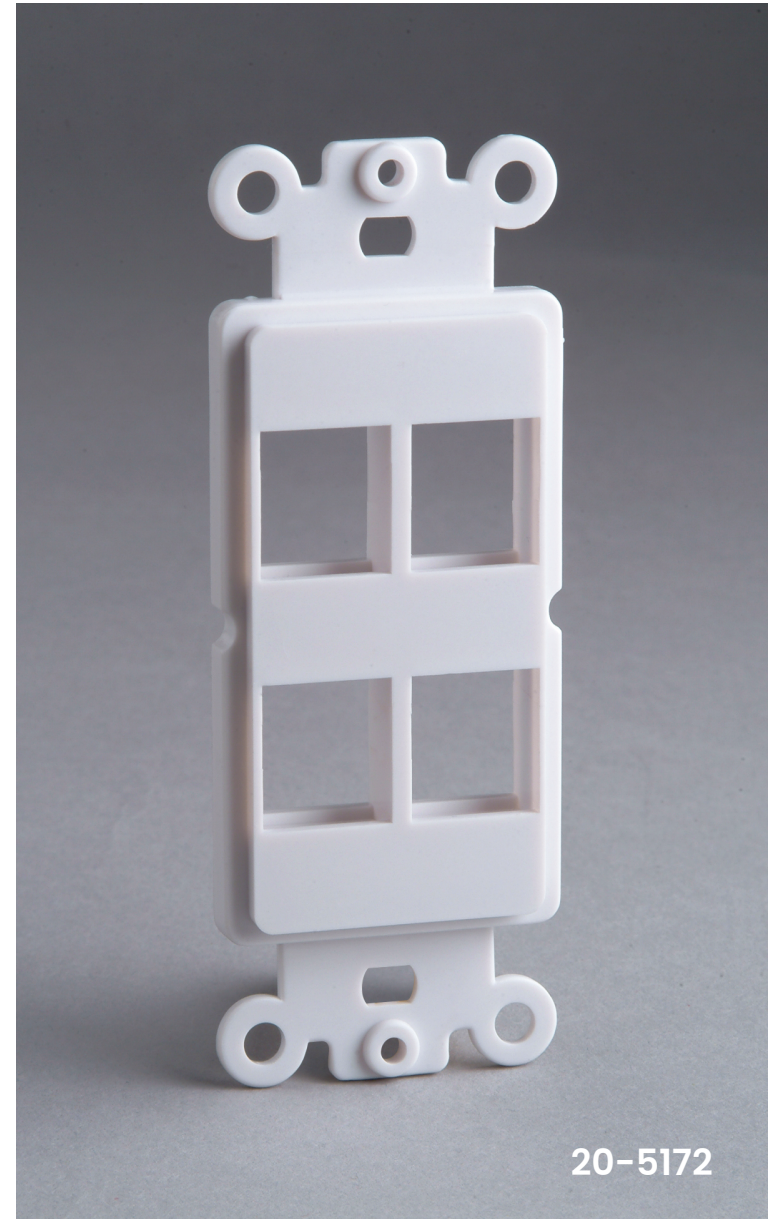
Décor Plate Inserts

The DataComm Décor Wall Plate Inserts are used to install low-voltage keystone inserts to a desired location. The decor inserts low profile design mounts flush to a decora style wallplate.

Specifications

- Accepts keystone inserts made by DataComm
- Available in 1, 2, 3 and 4 port options
- Mounts to a standard low voltage mounting bracket
- Works with any decor cover style cover plate

Part Number	Description
20-5142	Décor Plate Insert for 1 Keystone, White
20-5143	Décor Plate Insert for 1 Keystone, Ivory
20-5145	Décor Plate Insert for 1 Keystone, Lite Almond
20-5152	Décor Plate Insert for 2 Keystones, White
20-5153	Décor Plate Insert for 2 Keystones, Ivory
20-5155	Décor Plate Insert for 2 Keystones, Lite Almond
20-5162	Décor Plate Insert for 3 Keystones, White
20-5163	Décor Plate Insert for 3 Keystones, Ivory
20-5165	Décor Plate Insert for 3 Keystones, Lite Almond
20-5172	Décor Plate Insert for 4 Keystones, White
20-5173	Décor Plate Insert for 4 Keystones, Ivory
20-5175	Décor Plate Insert for 4 Keystones, Lite Almond



Sales Orders@datacommelectronics.com
Support Info@datacommelectronics.com
Office 770.448.0540

DATA COMMTM
ELECTRONICS