

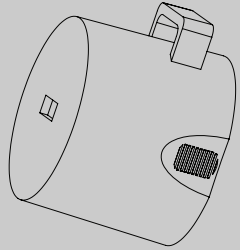
Instruction / Installation Sheet

DataComm Electronics Smurf Cap Part # 100-0125

DATA COMMTM
ELECTRONICS

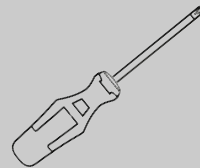
Sales Orders@datacommelectronics.com
Support Info@datacommelectronics.com
Office 770.448.0540

Parts Included



Smurf Cap (1)

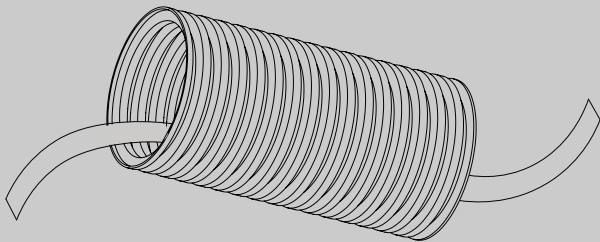
Tools Needed



Screw Driver (1)

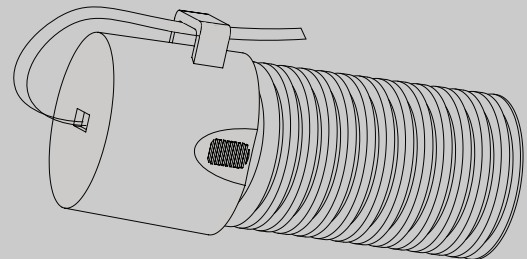
STEP 1

Locate the end of the smurf tube and feed the pull string out of the smurf tube.



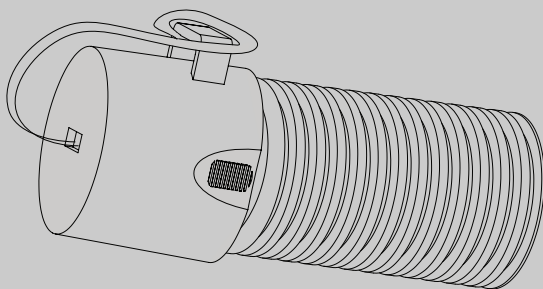
STEP 2

Feed the pull string through the smurf cap opening, and push smurf cap onto smurf tube. Feed the pull string through slot on the outside of cap.



STEP 3

Tie the string around the slot on the outside of the cap.



STEP 4

Secure the Smurf Cap into place by driving a screw through the hole at the bottom of the Smurf cap.

