

Universal Patch Panels

Features

- Color coded wiring labels for T568A and T568B wiring configurations
- Meets FCC Part 68
- Exceeds TIA/EIA Category 5e/6 standards for high performance transmission
- Designed to fit all standard 19" racks and cabinets
- 25-Year Channel System Warranty
- Comes preconfigured with easy to read 110-style punch downs on the rear side and six port RJ-45 front modules
- 16 gauge steel, black painted panel with UL 94V-0 rated jack housing
- Connector spring wire contacts are 50 micro inches gold over nickel

Patch Panel Accessories

Part # 20-5550
19" RACK CABLE MANAGEMENT
WIRE HOLDER

- For use with any 19" rack mount patch panel

Part # 20-5024
24-PORT BLANK
PATCH PANEL

- For use with any 19" rack mount

Part # 20-5551 & # 20-5552
HINGED WALL
MOUNT BRACKET

- Universal left or right hinge mounting
- For use with any 19" patch panel
- 6" deep mounting bracket

20-5550
19" Rack Cable Management
Wire Holder



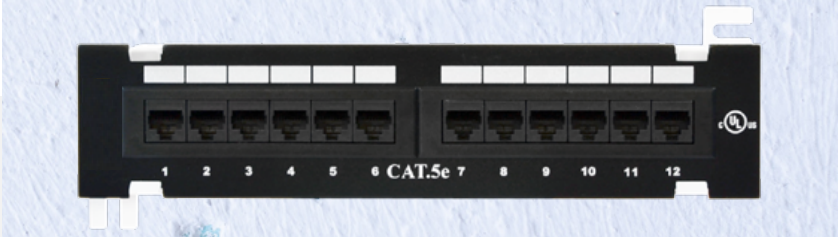
20-5551
1U Hinged Wall Mount Bracket



20-5552
2U Hinged Wall Mount Bracket



20-5024
24-Port Blank Patch Panel



Part Number	Description
20-5502	Category 5e, 12-Port Mini with 89D Mounting Bracket
20-5602	Category 6, 12-Port Mini with 89D Mounting Bracket
20-5512	Category 5e, 12-Port Patch Panel
20-5612	Category 6, 12-Port Patch Panel
20-5524	Category 5e, 24-Port Patch Panel
20-5624	Category 6, 24-Port Patch Panel
20-5548	Category 5e, 48-Port Patch Panel
20-5648	Category 6, 48-Port Patch Panel
20-5550	19" Rack Cable Management Wire Holder
20-5551	1U Hinged Wall Mount Bracket
20-5552	2U Hinged Wall Mount Bracket
20-5024	24-Port Blank Patch Panel



DATA COMM
ELECTRONICS

Sales Orders@datacommelectronics.com

Support Info@datacommelectronics.com

Office 770.448.0540